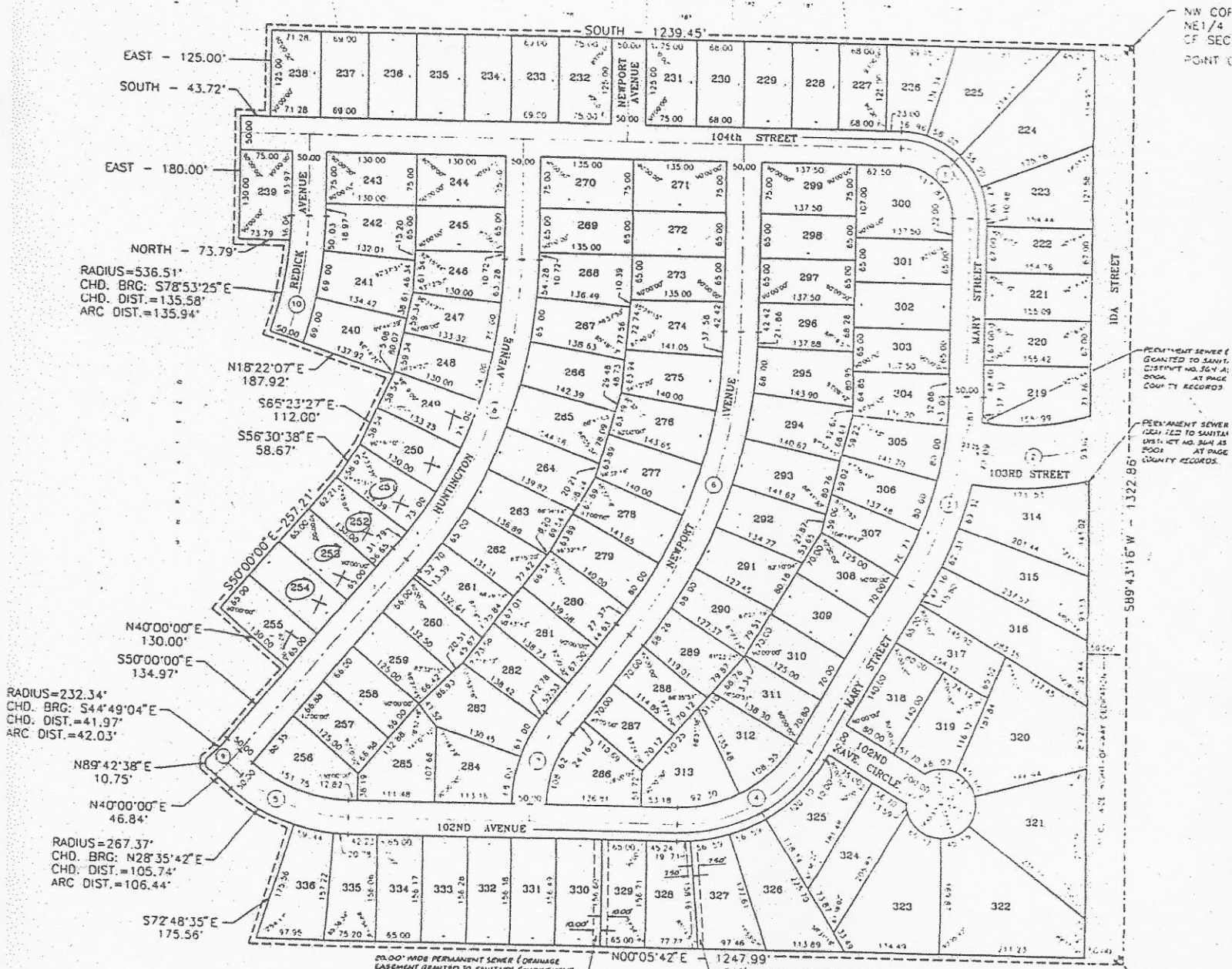


CHERRY HILLS II

LOTS 219 THRU 336, INCLUSIVE

BEING A PLATTING OF PART OF THE NE1/4 OF THE NW1/4 OF SECTION 33,
T16N, R12E OF THE 6TH P.M., DOUGLAS COUNTY, NEBRASKA.



RADIUS=536.51'
CHD. BRG: S78°53'25"E
CHD. DIST.=135.58'
ARC DIST.=135.94'

RADIUS=232.34'
CHD. BRG: S44°49'04"E
CHD. DIST.=41.97'
ARC DIST.=42.03'

RADIUS=267.37'
CHD. BRG: N28°35'42"E
CHD. DIST.=105.74'
ARC DIST.=106.44'

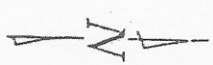
CENTERLINE CURVE DATA

- | | | |
|---|---|---|
| 1. DELTA=90°00'00"
T=100.00'
L=151.06'
R=100.00' | 5. DELTA=40°00'00"
T=88.22'
L=169.21'
R=242.37' | 9. DELTA=11°12'11"
T=25.24'
L=50.32'
R=257.34' |
| 2. DELTA=24°17'04"
T=83.86'
L=165.20'
R=389.76' | 6. DELTA=38°00'00"
T=250.00'
L=481.53'
R=726.05' | 10. DELTA=18°22'07"
T=90.79'
L=180.00'
R=561.51' |
| 3. DELTA=37°15'00"
T=150.00'
L=293.00'
R=554.96' | 7. DELTA=18°00'00"
T=65.00'
L=125.19'
R=198.77' | |
| 4. DELTA=58°45'00"
T=125.00'
L=254.54'
R=217.64' | 8. DELTA=40°00'00"
T=250.00'
L=481.53'
R=726.05' | |

60.00' WIDE PERMANENT SEWER (DRAINAGE EASEMENT) GRANTED TO SANITARY IMPROVEMENT DISTRICT NO. 364 BY MISC. BOOK 364 OF THE DOUGLAS COUNTY RECORDS.

15.00' WIDE PERMANENT SANITARY SEWER EASEMENT GRANTED TO SANITARY IMPROVEMENT DISTRICT NO. 364 AS RECORDED IN MISC. BOOK 364 OF THE DOUGLAS COUNTY RECORDS.

NOTE: DIRECT VEHICULAR INGRESS AND EGRESS OVER THE NORTH LINES OF LOTS 314, 315, 316, 320, 321 AND 322 ONTO 103A STREET WILL BE PERMITTED.



NW CORN
NE1/4
OF SEC
POINT

PERMANENT SEWER EASEMENT GRANTED TO SANITARY IMPROVEMENT DISTRICT NO. 364 BY MISC. BOOK 364 OF THE DOUGLAS COUNTY RECORDS.

PERMANENT SEWER EASEMENT GRANTED TO SANITARY IMPROVEMENT DISTRICT NO. 364 BY MISC. BOOK 364 OF THE DOUGLAS COUNTY RECORDS.

NE CORN
NE1/4
OF SECT